



The Intelligent Cash Box System



#### INTELLIGENT DROP MANAGEMENT

- Streamlines drop process
- Cash box totals are recorded automatically
- Meticulous cash box rotations no longer necessary, asset tracking is digital and automatic
- Reduces human error on slot floor and in count room

#### CUSTOMIZABLE WEB REPORTS

- Bill validator metrics, diagnostics and maintenance planning
- Change list of reports shown per user

#### INTUITIVE DASHBOARD USER INTERFACE

- Web access, improved navigation
- Provides multiple reports at a glance through graphs
- Graphs shown on dashboard can be modified for each user

#### THE INTELLIGENT CASH BOX SYSTEM (ICB®)

evolves your cash management and asset management. ICB empowers you with better, smarter, faster data than ever before, and its new intuitive design streamlines and simplifies cash box collection, saving you time and labor.

ICB's new dashboard, mobility and customizable web reporting allows you to access essential information securely anytime, anywhere.

It's the most advanced system we've ever created, and advances your drop process like never before.

# EVOLVED ENGINEERING

With ICB 3.0 Web Reports, you get complete information on bill acceptance rates, acceptor versions, duplicate assets, error history and revenue, in summary or detail. You can now make intelligent, proactive management plans, improve your cash-handling processes and maintenance with ease, ultimately improving your bottom line.



## HIGHLIGHTS

ICB 3.0 evolves data management to an impressive new level by improving custom reporting, data management and metrics.

### Streamlines Drop Process

- Intelligent drop management – asset/zone grouping, schedule and calendar notification
- Electronic asset management allows cash box to be placed into any other machine
- Amount in cash box automatically reported to database, adding more security to count room

### Intuitive Dashboard User Interface/User Friendly Design

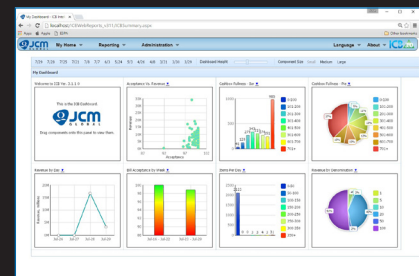
- Drag-and-drop features
- Improved navigation
- Configurable dashboard widgets

### Saves Time and Money

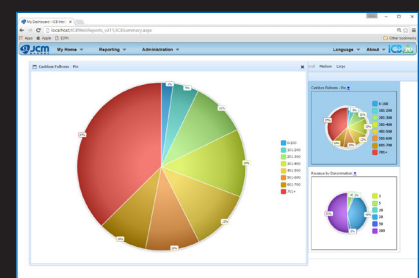
- Increase count team efficiencies – decrease drop collection time
- Reduces human error – simplifies cash box collection

### ICB Web Reporting

- Total bill validator metrics
- Bill validator firmware report is a key feature that provides data not available from the OEM host system
- Simplify variance investigation
- Customizable reports
- Report data can be exported into multiple formats



Monday	Tuesday	Wednesday	Thursday	Friday	Saturday
Group 1 Asset 1 Asset 2 Asset 3 Asset 4 Asset 5 Asset 6 Asset 7 Asset 8 Asset 9 Asset 10 Asset 11 Asset 12 Asset 13 Asset 14 Asset 15 Asset 16 Asset 17 Asset 18 Asset 19 Asset 20 Asset 21 Asset 22 Asset 23 Asset 24 Asset 25 Asset 26 Asset 27 Asset 28 Asset 29 Asset 30 Asset 31 Asset 32 Asset 33 Asset 34 Asset 35 Asset 36 Asset 37 Asset 38 Asset 39 Asset 40 Asset 41 Asset 42 Asset 43 Asset 44 Asset 45 Asset 46 Asset 47 Asset 48 Asset 49 Asset 50 Asset 51 Asset 52 Asset 53 Asset 54 Asset 55 Asset 56 Asset 57 Asset 58 Asset 59 Asset 60 Asset 61 Asset 62 Asset 63 Asset 64 Asset 65 Asset 66 Asset 67 Asset 68 Asset 69 Asset 70 Asset 71 Asset 72 Asset 73 Asset 74 Asset 75 Asset 76 Asset 77 Asset 78 Asset 79 Asset 80 Asset 81 Asset 82 Asset 83 Asset 84 Asset 85 Asset 86 Asset 87 Asset 88 Asset 89 Asset 90 Asset 91 Asset 92 Asset 93 Asset 94 Asset 95 Asset 96 Asset 97 Asset 98 Asset 99 Asset 100	Group 1 Asset 1 Asset 2 Asset 3 Asset 4 Asset 5 Asset 6 Asset 7 Asset 8 Asset 9 Asset 10 Asset 11 Asset 12 Asset 13 Asset 14 Asset 15 Asset 16 Asset 17 Asset 18 Asset 19 Asset 20 Asset 21 Asset 22 Asset 23 Asset 24 Asset 25 Asset 26 Asset 27 Asset 28 Asset 29 Asset 30 Asset 31 Asset 32 Asset 33 Asset 34 Asset 35 Asset 36 Asset 37 Asset 38 Asset 39 Asset 40 Asset 41 Asset 42 Asset 43 Asset 44 Asset 45 Asset 46 Asset 47 Asset 48 Asset 49 Asset 50 Asset 51 Asset 52 Asset 53 Asset 54 Asset 55 Asset 56 Asset 57 Asset 58 Asset 59 Asset 60 Asset 61 Asset 62 Asset 63 Asset 64 Asset 65 Asset 66 Asset 67 Asset 68 Asset 69 Asset 70 Asset 71 Asset 72 Asset 73 Asset 74 Asset 75 Asset 76 Asset 77 Asset 78 Asset 79 Asset 80 Asset 81 Asset 82 Asset 83 Asset 84 Asset 85 Asset 86 Asset 87 Asset 88 Asset 89 Asset 90 Asset 91 Asset 92 Asset 93 Asset 94 Asset 95 Asset 96 Asset 97 Asset 98 Asset 99 Asset 100	Group 1 Asset 1 Asset 2 Asset 3 Asset 4 Asset 5 Asset 6 Asset 7 Asset 8 Asset 9 Asset 10 Asset 11 Asset 12 Asset 13 Asset 14 Asset 15 Asset 16 Asset 17 Asset 18 Asset 19 Asset 20 Asset 21 Asset 22 Asset 23 Asset 24 Asset 25 Asset 26 Asset 27 Asset 28 Asset 29 Asset 30 Asset 31 Asset 32 Asset 33 Asset 34 Asset 35 Asset 36 Asset 37 Asset 38 Asset 39 Asset 40 Asset 41 Asset 42 Asset 43 Asset 44 Asset 45 Asset 46 Asset 47 Asset 48 Asset 49 Asset 50 Asset 51 Asset 52 Asset 53 Asset 54 Asset 55 Asset 56 Asset 57 Asset 58 Asset 59 Asset 60 Asset 61 Asset 62 Asset 63 Asset 64 Asset 65 Asset 66 Asset 67 Asset 68 Asset 69 Asset 70 Asset 71 Asset 72 Asset 73 Asset 74 Asset 75 Asset 76 Asset 77 Asset 78 Asset 79 Asset 80 Asset 81 Asset 82 Asset 83 Asset 84 Asset 85 Asset 86 Asset 87 Asset 88 Asset 89 Asset 90 Asset 91 Asset 92 Asset 93 Asset 94 Asset 95 Asset 96 Asset 97 Asset 98 Asset 99 Asset 100	Group 1 Asset 1 Asset 2 Asset 3 Asset 4 Asset 5 Asset 6 Asset 7 Asset 8 Asset 9 Asset 10 Asset 11 Asset 12 Asset 13 Asset 14 Asset 15 Asset 16 Asset 17 Asset 18 Asset 19 Asset 20 Asset 21 Asset 22 Asset 23 Asset 24 Asset 25 Asset 26 Asset 27 Asset 28 Asset 29 Asset 30 Asset 31 Asset 32 Asset 33 Asset 34 Asset 35 Asset 36 Asset 37 Asset 38 Asset 39 Asset 40 Asset 41 Asset 42 Asset 43 Asset 44 Asset 45 Asset 46 Asset 47 Asset 48 Asset 49 Asset 50 Asset 51 Asset 52 Asset 53 Asset 54 Asset 55 Asset 56 Asset 57 Asset 58 Asset 59 Asset 60 Asset 61 Asset 62 Asset 63 Asset 64 Asset 65 Asset 66 Asset 67 Asset 68 Asset 69 Asset 70 Asset 71 Asset 72 Asset 73 Asset 74 Asset 75 Asset 76 Asset 77 Asset 78 Asset 79 Asset 80 Asset 81 Asset 82 Asset 83 Asset 84 Asset 85 Asset 86 Asset 87 Asset 88 Asset 89 Asset 90 Asset 91 Asset 92 Asset 93 Asset 94 Asset 95 Asset 96 Asset 97 Asset 98 Asset 99 Asset 100	Group 1 Asset 1 Asset 2 Asset 3 Asset 4 Asset 5 Asset 6 Asset 7 Asset 8 Asset 9 Asset 10 Asset 11 Asset 12 Asset 13 Asset 14 Asset 15 Asset 16 Asset 17 Asset 18 Asset 19 Asset 20 Asset 21 Asset 22 Asset 23 Asset 24 Asset 25 Asset 26 Asset 27 Asset 28 Asset 29 Asset 30 Asset 31 Asset 32 Asset 33 Asset 34 Asset 35 Asset 36 Asset 37 Asset 38 Asset 39 Asset 40 Asset 41 Asset 42 Asset 43 Asset 44 Asset 45 Asset 46 Asset 47 Asset 48 Asset 49 Asset 50 Asset 51 Asset 52 Asset 53 Asset 54 Asset 55 Asset 56 Asset 57 Asset 58 Asset 59 Asset 60 Asset 61 Asset 62 Asset 63 Asset 64 Asset 65 Asset 66 Asset 67 Asset 68 Asset 69 Asset 70 Asset 71 Asset 72 Asset 73 Asset 74 Asset 75 Asset 76 Asset 77 Asset 78 Asset 79 Asset 80 Asset 81 Asset 82 Asset 83 Asset 84 Asset 85 Asset 86 Asset 87 Asset 88 Asset 89 Asset 90 Asset 91 Asset 92 Asset 93 Asset 94 Asset 95 Asset 96 Asset 97 Asset 98 Asset 99 Asset 100	Group 1 Asset 1 Asset 2 Asset 3 Asset 4 Asset 5 Asset 6 Asset 7 Asset 8 Asset 9 Asset 10 Asset 11 Asset 12 Asset 13 Asset 14 Asset 15 Asset 16 Asset 17 Asset 18 Asset 19 Asset 20 Asset 21 Asset 22 Asset 23 Asset 24 Asset 25 Asset 26 Asset 27 Asset 28 Asset 29 Asset 30 Asset 31 Asset 32 Asset 33 Asset 34 Asset 35 Asset 36 Asset 37 Asset 38 Asset 39 Asset 40 Asset 41 Asset 42 Asset 43 Asset 44 Asset 45 Asset 46 Asset 47 Asset 48 Asset 49 Asset 50 Asset 51 Asset 52 Asset 53 Asset 54 Asset 55 Asset 56 Asset 57 Asset 58 Asset 59 Asset 60 Asset 61 Asset 62 Asset 63 Asset 64 Asset 65 Asset 66 Asset 67 Asset 68 Asset 69 Asset 70 Asset 71 Asset 72 Asset 73 Asset 74 Asset 75 Asset 76 Asset 77 Asset 78 Asset 79 Asset 80 Asset 81 Asset 82 Asset 83 Asset 84 Asset 85 Asset 86 Asset 87 Asset 88 Asset 89 Asset 90 Asset 91 Asset 92 Asset 93 Asset 94 Asset 95 Asset 96 Asset 97 Asset 98 Asset 99 Asset 100



# INTELLIGENT CASH BOX SYSTEM



## iVIZION® 600/1,000 NOTE INTELLIGENT CASH BOX (ICB®)

The durable, high impact resistant cash box utilizes RFID communication technology for downloading the ICB Memory Module.



## UBA® 500/900 NOTE INTELLIGENT CASH BOX (ICB)

The durable, high impact resistant cash box utilizes IR communication technology for downloading the ICB Memory Module.

### Dock - Download - Reset

Dock the ICB cash box on the Dual Read/Write Tool - downloads and resets the cash box Memory Module.

### Redistribute

The downloaded ICB cash boxes are now ready to be redistributed back onto the slot floor.



## SOFT COUNT ROOM PROCESS

### Transmit Data

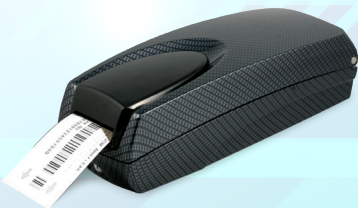
The Read/Write Tool transmits the asset data to the Printer Station - sends all base line transaction data to the MDM PC Computer/Server.

### Consolidate Asset Data

The printer station generates a bar-coded ticket with asset data and is consolidated with the notes and TITO tickets removed from the cash box - all loaded into the Count Sort Device.

### Generate Reports

Cash box memory module data recorded to DB and available through versatile reporting system



### PRINTER STATION

Prints critical asset information from the cash box download and generates this in a bar-coded format for use in the Count Sort devices. (See below for Count Sort compatibility.)



### MDM PC COMPUTER/SERVER

Receives all data downloaded and generates the entire ICB suite of Prime Reports.



### DUAL READ/WRITE TOOL

Designed to download both the UBA and the iVIZION cash box data.

## COUNT SORT MACHINE

- Cash Processing Solutions (CPS)
- Cummins Allison®
- De La Rue®
- Giesecke & Devrient® (G&D)
- Glory®
- Toshiba®

## OPTIONS

- CPS ECM™ Edge
- JetScan iFX, JetScan MPS
- BPS Connect Casino, Header Card Creator

## PRINTER TYPE

- Zebra
- CouponXpress, SATO M-5900RV
- CouponXpress
- Zebra
- CouponXpress
- CouponXpress



The Intelligent Cash Box System

## WEB REPORTS

### System Requirements

ICB Hosting Server – Requirements  
(can be virtual or physical)

Operating System: Windows Server 2012 R2 or higher

MS SQL: MS SQL 2014 Express or higher

RAM: 8 GB

HDD: 250 GB with 4 GB or more of available hard disk space

Processor: 2.5 GHz Quad Core

IIS: Version 1.5 or later

Web Reports will initially consume around 100 MB and will increase in size by 300 MB per year for every 1000 daily drops

### MDM PC

Operating System: Windows 10 Pro or higher

RAM: 4 GB

HDD: 100 GB with 1 GB or more of available hard disk space

Processor: 2.0 GHz Dual Core

Serial Ports: One or more. For >1 (PCI or PCI-E Card)

Internet Browser: Internet Explorer 11, Fire Fox, Chrome

### System Requirements Continued

Web Browser PC (used to view Web Reports)

Operating System: Windows 7/8/10 Pro

RAM: 2 GB

HDD: 80 GB

Processor: Any Dual Core

Internet Browser: Internet Explorer 11, Fire Fox, Chrome

Resolution: 1024 x 768 or better

### Optional Requirements

To enable SSL, a certificate will need to be issued to the computer or server hosting Web Reports. Issuing a certificate from a trusted certificate authority, either on your network, or from a 3rd party like VeriSign, will prevent phishing warnings from being displayed to users.

### Required Count Room Equipment

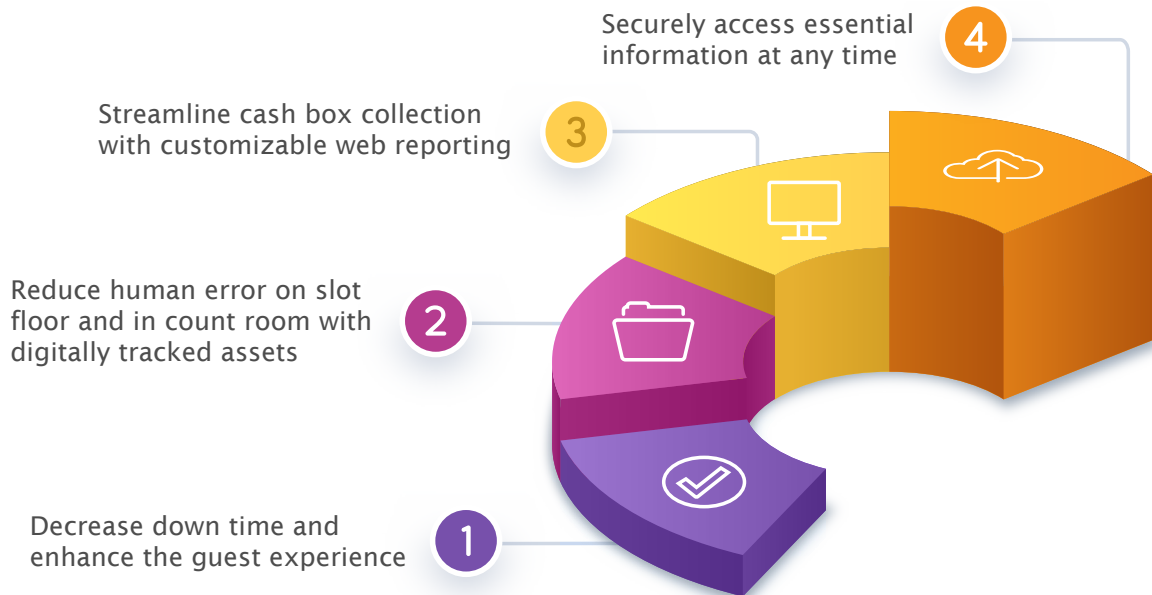
ICB equipped Bill Validators

ICB equipped Cash Boxes

Docking Stations

CouponXpress Printer

MDM PC



### THE AMERICAS HEADQUARTERS JCM American Corporation

925 Pilot Road  
Las Vegas, NV 89119  
USA

Tel: 800-683-7248  
(800# for USA, Canada & Mexico)  
Tel: 702-651-0000

### ASIA-PACIFIC HEADQUARTERS Japan Cash Machine Co., Ltd.

2-23-2 Higashi Nihonbashi,  
Chuo-ku  
Tokyo 103-0004  
Japan

Tel: 81-3-5962-3731

### EMEA HEADQUARTERS JCM Europe GmbH

Muendelheimer Weg 60  
D-40472 Dusseldorf  
Germany

Tel: 49-211-530645-0