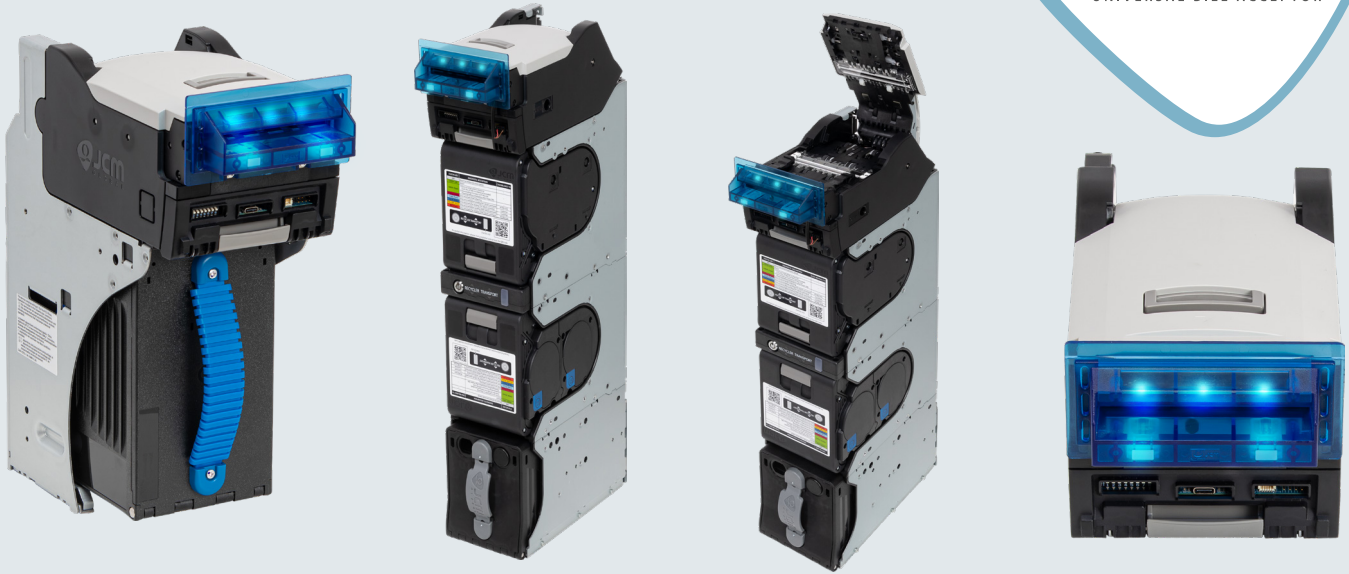


# BILL VALIDATOR

## UBA ULTRA FAMILY RT/RQ

**UBA Pro R**  
UNIVERSAL BILL ACCEPTOR

**UBA Pro R**  
UNIVERSAL BILL ACCEPTOR



### BEST-IN-CLASS VALIDATION

- ◆ **Advanced Contact Image Sensor Technology (CIS)**  
CIS captures 100% of both sides of note or ticket image
- ◆ **Acceptance rate and counterfeit recognition at high level**
- ◆ **Mechanical anti-fishing technology**
- ◆ **OCR (optional)**

### LOW COST OF OWNERSHIP

- ◆ **New design with field replaceable modules**
- ◆ **Reduction of machine downtime**

### ACCOUNTABILITY

- ◆ **Intelligent Cash Box (ICB®) support delivers business intelligence and reduces reconciliation errors**
- ◆ **RFID memory module accurately links and captures cash box transactions**
- ◆ **Web-enabled ICB reports access encrypted data from the cash box**

### COMPATIBILITY

- ◆ **Fully compatible to the UBA Pro series platform**

### THE UBA ULTRA RT/RQ WITH 2/4 DENOMINATIONS ESTABLISHES A NEW STANDARD OF SECURITY AND EFFICIENCY IN BANKNOTE RECYCLING

The UBA Ultra-RT/RQ Recycler leads in cash management innovation, providing a comprehensive solution for casinos focused on security, accountability, and efficiency. It combines top-tier validation, high durability, and cost-effectiveness, making it a reliable choice for today's gaming industry.

# GENERAL SPECIFICATION

**UBAProR**  
UNIVERSAL BILL ACCEPTOR

**UBAProR**  
UNIVERSAL BILL ACCEPTOR

## ACCEPTANCE RATE

- 98% or more

## BANKNOTE SIZE

- Long side: 120–170 mm (-165 mm with SS-L Box), short side: 62–82 mm (-85 mm with SS-L Box)

## BANKNOTE SIZE (RECYCLER & PAY OUT)

- Long side: 120–170 mm, short side: 62–82 mm

## BANKNOTE INSERTION DIRECTION

- 4 ways

## BARCODE TICKET

- 2 ways (face up), 4 ways (as option)

## DIMENSIONS (WXHxD)

### • RT:

397 (H) x 241 (D) x 114 (W) (with SH3 Box)  
465 (H) x 241 (D) x 114 (W) (with SS-L Box)

### • RQ:

547 (H) x 241 (D) x 114 (W) (with SH3 Box)  
615 (H) x 241 (D) x 114 (W) (with SS-L Box)

## WEIGHT:

- RT: Approx. 8 kg (with SH3 Box)
- RQ: Approx. 11.4 kg (with SH3 Box)

## CASH BOX TYPE

- Security Box (Standard), ICB Box (optional)

## CASH BOX CAPACITY

- 500 notes (new banknotes), 900 notes (new banknotes)

## HEAD TYPES

- UBA-700: CIS (standard), • UBA-701: CIS + UV + MAG

## BARCODE ACCEPTANCE

- 1D Barcode, 2D Barcodes (QR code, PDF417, DATA Matrix)

## INTERFACE

- USB (USB Specification Rev. 2.0 Compliance)
- Photo-Coupler Isolation, RS232C, cc-Talk, TTL

## POWER CONSUMPTION

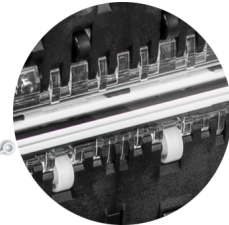
- 24V – Idle: 0.3A, in Operation: 2.1A, Peak: 3.8A



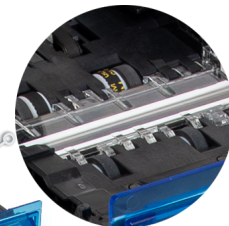
Various Plastic Bezels



Various Metal Bezels



CIS Package



- 800 notes  
Cash Box



**JCM Europe GmbH**  
Mundelheimer Weg 60  
D-40472 Düsseldorf,  
Germany  
Tel: +49 211 530645-0

**Japan Cash Machine Co., Ltd**  
2-23-2, Higashi Nihonbashi,  
Chuo-ku  
Tokyo 103-0004, Japan  
Tel: +81-3-5962-3731

**JCM American Corporation**  
925 Pilot Road  
Las Vegas, NV 89119, USA  
Tel: +01 800-683-7248  
(800# for USA, Canada & Mexico)  
Tel: +01 702-651-0000

## FOLLOW US ON



JCM Global, JCM Global logo, and other marks used herein are trademarks and registered trademarks of Japan Cash Machine Co., Ltd. and JCM American Corporation. Additional marks are registered trademarks of their respective owners. JCM Global reserves the right to change product specifications without notice.

Find out more at  
[www.jcmglobal.de](http://www.jcmglobal.de)

