

www.jcmglobal.com

For updates on JCM Global® products, services, and events, follow JCM Global on Facebook®, LinkedIn®, Twitter™ and YouTube™



facebook.com/JCMglobal

twitter.com/jcmglobal

linkedin.com/company/jcm-global

youtube.com/jcmglobal

Parts are Parts



Figure 1 iVIZION® Calibration Reference Paper KS-089

Part No. 211266

Description: iVIZION® Calibration Reference Paper KS-089

Usage: JCM recommends calibration of the iVIZION Banknote Validator if any Processor PCB or Sensor PCB has been replaced. Calibration is also recommended if the iVIZION Unit has been disassembled and reassembled. The iVIZION Calibration Reference Paper KS-089 (Figure 1) can be used on all iVIZION units with 72mm Bill Guides or no Bill Guides (85mm). For details on Calibrating the iVIZION Banknote Validator, refer to the iVIZION Operation and Maintenance Manual (available on the JCM Global Exchange site at <https://exchange.jcmglobal.com>).

Note: iVIZION Calibration Reference Paper must be handled with extreme care. Avoid any dirt, smudges or bends on the Reference Paper, which will affect Calibration. Additionally, ensure that JCM Tool Suite V1.51 (which supports the latest updates to the iVIZION Calibration process) is used to calibrate the iVIZION Banknote Validator.

Latest JCM Software Listing

UNIT	Country	ID	Version	Check Sum	CRC
UBA-10/11-SS	USA	ID-003	V-2.83-52	3CDD	D358
UBA-10/11-SS	USA	ID-024	V-2.83-25	F54F	6DCE
UBA-14/24-SS/SU	USA	ID-003	V-2.83-40	B026	1455
UBA-14/24-SS/SU	USA	ID-0G8	V-2.83-80	91A8	89B6
UBA-14/24-SS/SU	USA	ID-024	V-2.83-37	647C	05B2
UBA-14/24-SS/SU	USA	ID-028	V-2.83-25	34A9	87B4
iVIZION-100 SS/SU	USA	ID-003	V-2.84-44	94D4	0789
iVIZION-100 SS/SU	USA	ID-008	V-2.83-22	7DEB	39B4
iVIZION-100 SS/SU	USA	ID-024	V-2.84-15	C0FC	652D
iVIZION-100 SS/SU	USA	ID-028	V-2.86-31	5EB6	C1BA
iVIZION-100 SS/SU	USA	ID-0G8	V-2.84-39	E589	DA07
UBA-10/11-SS	CAN	ID-003	V-2.82-52	B445	56DD
UBA-10/11-SS	CAN	ID-024	V-2.82-25	8FC3	D9AD
UBA-14/24-SS/SU	CAN	ID-003	V-2.82-40	CEF6	5E8C
UBA-14/24-SS/SU	CAN	ID-024	V-2.82-37	C66F	E2BE
UBA-14/24-SS/SU	CAN	ID-028	V-2.82-25	FD47	E01A
UBA-14/24-SS/SU	CAN	ID-0G8	V-2.82-74	F0D0	9716
iVIZION-100 SS/SU	CAN	ID-003	V-2.84-44	29AD	68F1
iVIZION-100 SS/SU	CAN	ID-024	V-2.84-15	F99C	D926
iVIZION-100 SS/SU	CAN	ID-028	V-2.84-31	6214	F0A6
iVIZION-100 SS/SU	CAN	ID-0G8	V-2.85-41	7FE8	B874

The Latest JCM Software Listing (shown above) identifies specific software versions that have been released to OEMs. It is the responsibility of the OEM to obtain all required approvals from Gaming Regulators and Jurisdictional Authorities necessary for use of approved software versions. Contact the Game Manufacturer (OEM) for information on specific software releases approved for use within your gaming jurisdiction.

JCM recommends using the latest version for maximum acceptance, security, and performance.

JCM eLearning Offerings

JCM offers the following Training Options to help keep your JCM Products performing within factory specifications:

Online Training

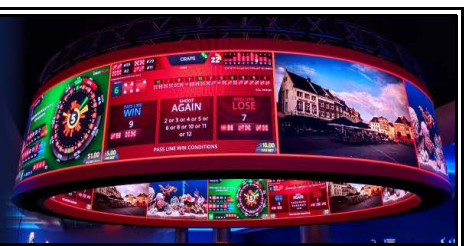
For those who prefer self-study, Online Training is available 24/7. Training can be completed as your schedule permits. A Certificate of Completion is provided upon course completion.

Virtual Training

Instructor-led events for all JCM products are also available. Full interaction between attendees and the Instructor meets the needs of your team. Contact JCM Training at training.jcmglobal.com for more information.

Create Immersive Environments with JCM Global® Digital Signage Solutions

JCM Global Digital Signage Solutions allow operators to communicate with their guests in more meaningful and entertaining ways. With unsurpassed color uniformity and dazzling pixel-to-pixel resolution, JCM's digital signage technology offers guests a unique experience in sports books, hotel lobbies, casino floors, and more. The Digital Signage Solutions product line includes flat, curved, cube, and transparent displays that showcase engaging and impactful video content. From large scale LED video walls to intricate architectural signage, JCM delivers breathtaking installations that are only limited by the imagination.





FREE JCM TRAINING AVAILABLE 24/7

Technicians need training, but is time or class availability a problem? JCM Online Training offers classes to meet your schedule and your needs. JCM Online Training Programs feature the same content as JCM On-site Training with the added convenience of flexible scheduling. Visit training.jcmglobal.com for more information or to register for classes.

Technical Bulletin 202106 June 2021

JCM Digital Signage Solutions Provide WOW Factor to Casinos

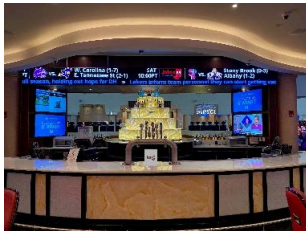
What started as a Sportsbook trend - with operators wanting to enhance their guests' experience - has grown into a full-fledged Digital Signage Revolution. JCM Global® (JCM) is leading the way with its broad range of Digital Signage Solutions.

Flexible, configurable, and capable of displaying a virtually infinite range of content, JCM's Digital Signage Solutions (DSS) help operators of all sizes and in all locations create bigger-than-life experiences for their guests.

JCM's DSS teams work closely with operators to understand their goals and to develop creative ways to leverage new technology to offer casino guests environments that are unique architectural additions to the individual property and brand.

For additional information on JCM Digital Signage Solutions, visit the JCM installation showcase at <https://am-en.jcmglobal.com/product/dss-installation-showcase/> or contact your local JCM Sales Representative at sales@jcmglobal.com.

For information about other JCM Products, visit the JCM Global website at www.jcmglobal.com, or contact your local JCM Sales Representative at (800) 683-7248.



Jake's 58 Casino Hotel



MotorCity Casino Hotel



JCM Installs Count-Sort Machine

JCM has installed CPS's X Range™ X9500 Count-Sort Machine at Coyote Valley Casino in Redwood Valley, California, increasing operational intelligence and efficiency with end-to-end Cash Handling Solutions. This marks JCM's first sale of the CPS X Range in the California market.

Like all sort modes available with the X Range, the X9500 Count-Sort Machine has advanced flexibility, scalability, and productivity. The X Range is a high-capacity desktop Banknote sorting machine, and the X9500 configuration includes nine pockets, each with a 500-note capacity.

Current Service Manual Releases

Product	Rev.	Product	Rev.
DBV-500 Operations Manual	2	TBV	4
DBV-400 Operations Manual	1	TBV-101-ASH	A
DT-200 BlueWave 2	7	UBA-10/11/14/24/25	4
EBA-40	2	UBA-RC	4
ICB 3.0 Web Reports Ops Manual	3	UBA Pro RT/RQ	A
iPRO	3	VEGA	5
iPRO-RC	4	VEGA-RC	3
iVIZION	7	FL Operator & Technician's Manual	3
JCM Tool Suite	4	GEN5 Operations Manual	2
PromoNet Marketing Studio	5	BlueWaveDX Tool (DT-300)	1
PromoNet Online Monitor	A		

To access JCM Product Manuals, visit: <https://exchange.jcmglobal.com>



JCM TECHNICAL SUPPORT CONTACTS

Headquarters (Japan)		
Sales and Service	+81-3-5962-3731	hq-jp@jcmglobal.com
Europe, Middle East, Africa, Russia		
Sales	+49-211-530645-50	support@jcmglobal.eu
Service	+49-211-530645-60	
Australia, Oceania		
Sales and Service	+612 96 48 0811	australia@jcmglobal.com
Southeast Asia		
Sales and Service	+853 28 72 2684	asiastupport@jcmglobal.com
North/South America/Canada/Caribbean		
Toll Free Product Support	(800) 683-7248 or (702) 651-0000	support@jcmglobal.com

After Hours Americas Support

JCM American prides itself in offering the best Customer Service in the industry. We offer a 24 hour After Hours Hotline, where Technical Support Personnel can be reached at any time, 7 days a week. To reach our 24/7 After Hours Hotline:
 1.) Call JCM American at (800) 683-7248.
 2.) Select "Option 1" and wait for the call to be transferred to the JCM after hours Technical Support line.
 3.) Speak with a certified JCM Support Technician about your situation.

JCM Global is a registered trademark of JCM American Corporation. All other product names mentioned herein may be registered trademarks or trademarks of their respective companies. Furthermore, TM and ® are not mentioned in each case in this publication.