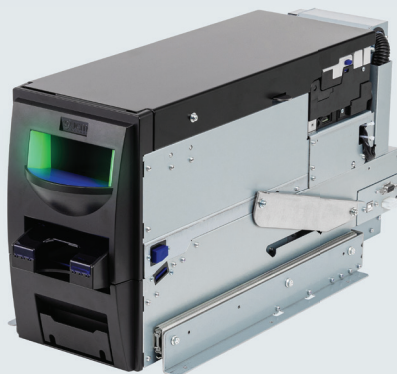


BILL VALIDATOR RDM™

RDM™
Retail Deposit Module



HIGH-SPEED DEPOSIT

- Secure deposits at 6 notes per second

BULK NOTE FEED

- 250-note capacity reduces load frequency

FLEXIBLE CONFIGURATION

- Easy integration to the top or inside of an intelligent deposit safe

FULL NOTE SCANNING

- High acceptance, dye stain detection, serial number reading, and superior counterfeit rejection

ONE-WAY TRANSPORT PATH

- Highly reliable transport path with separate return tray

THE NEW RDM-200 IS A HIGH-SPEED, SHORT-EDGE BANKNOTE VALIDATION MODULE WITH OUR "STATE-OF-THE-ART" CIS TECHNOLOGY

The RDM, an institution for financial deposit, intelligent safe deposit, and behind-the-counter applications goes into the next generation. RDM-200 is now equipped with a contact image sensor (CIS), using multiple wavelength full-width image scanning in its sensor package, allowing for superior banknote validation, dye stain note detection, and serial number reading. The CIS sensor technology ensures even higher security, acceptance rates, and faster processing thanks to high-resolution image recognition. The innovative design of the RDM-200's transport paths enables 6 banknotes per second to be processed with the highest possible reliability. RDM-200 is the ideal banknote acceptor when it comes to installation on or in deposit safes.

GENERAL SPECIFICATION

ACCEPTANCE RATE

- 98% or greater

BANKNOTE TYPES ACCEPTED

- Long edge 110-160mm (4.33-6.29")
- Short edge 60-82mm (2.36-3.11")

INSERTION DIRECTION

- Banknote: Four-way

BULK NOTE FEED CAPACITY

- 250 notes maximum (1 to 250 notes)

RETURN NOTE TRAY CAPACITY

- 20 notes maximum (software configurable)

PROCESSING SPEED

- 6 notes/second (.166 seconds/note)

VALIDATION METHOD

- Optical multiple wavelengths, transparency, and reflective with full image scanning

DIAGNOSTIC INDICATORS

- Full color status LED via bezel and return tray

ESCROW

- NA

PROTOCOL

- JCM proprietary

PROTOCOL INTERFACE

- USB 2.0 or RS232

SUPPLY VOLTAGE

- 24VDC (±10%)

CURRENT CONSUMPTION

- Standby = 0.4A
- Operation = 3.2A
- Peak = 4.7A

ENVIRONMENT

- Operating temperature: +5°C to +45°C (41°F to 113°F)

STORAGE TEMPERATURE

- -20°C to +60°C (-4°F to 140°F)

RELATIVE OPERATING HUMIDITY

- 20% to 80% RH (non-condensed)

RELATIVE STORAGE HUMIDITY:

- 10% to 90% RH (non-condensed)

VISIBLE LIGHT SENSITIVITY

- Caution: Avoid light on the banknote insertion/return slots having an illumination index of 3000 Lux or less, and if warm color incandescent light range radiant of 0 to 45 degrees from all sides, or if light from a mercury lamp a radiant angle between 10 to 85 degrees.

INSTALLATION

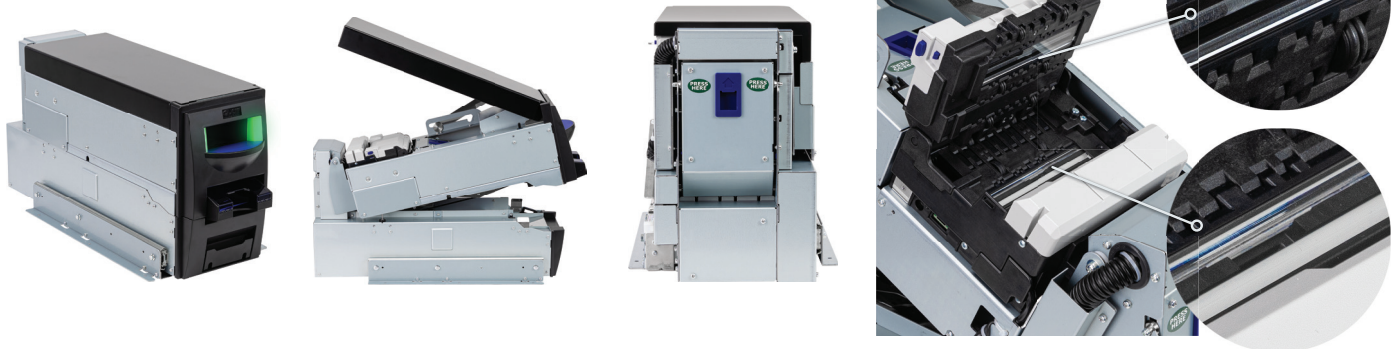
- Indoors only (built-in) fixture material/shape must endure 55kg weight without distortion

WEIGHT

- Approximately 17kg (37.48lbs.)
- Mounting: Built-in

MOUNTING, HORIZONTAL

- 0 degrees, ±0 degrees angle



CIS Modules



JCM Europe GmbH
Mundelheimer Weg 60
D-40472 Dusseldorf,
Germany
Tel: +49 211 530645-0

Japan Cash Machine Co., Ltd
2-23-2, Higashi Nihonbashi,
Chuo-ku
Tokyo 103-0004, Japan
Tel: +81-3-5962-3731

JCM American Corporation
925 Pilot Road
Las Vegas, NV 89119, USA
Tel: +01 800-683-7248
(800# for USA, Canada & Mexico)
Tel: +01 702-651-0000

FOLLOW US ON



JCM Global, JCM Global logo, and other marks used herein are trademarks and registered trademarks of Japan Cash Machine Co., Ltd. and JCM American Corporation. Additional marks are registered trademarks of their respective owners. JCM Global reserves the right to change product specifications without notice.

Find out more at
www.jcmglobal.de

