

[www.jcmglobal.com](http://www.jcmglobal.com)

For updates on JCM Global products, services, and events, follow JCM Global on Facebook®, LinkedIn®, Twitter™ and YouTube™



[facebook.com/JCMglobal](https://facebook.com/JCMglobal)

[twitter.com/jcmglobal](https://twitter.com/jcmglobal)

[linkedin.com/company/jcm-global](https://linkedin.com/company/jcm-global)

[youtube.com/jcmglobal](https://youtube.com/jcmglobal)

## Parts are Parts

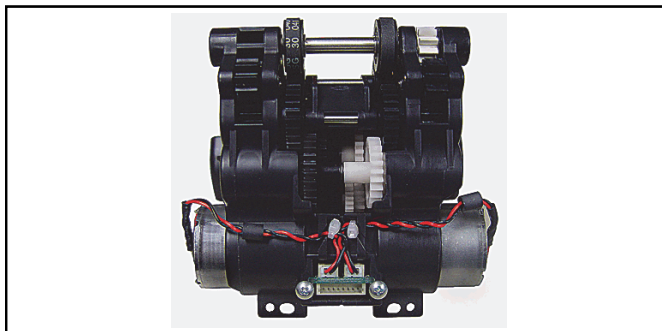


Figure 1 iVIZION®-100 Motor Gear Assembly (P/N 248500)

**Part No.** 248500

**Description:** iVIZION®-100 Motor Gear Assembly

**Usage:** The iVIZION-100 Motor Gear Assembly (EDP#248500) is used on iVIZION-100 SS and SU Validators, and provides transport and stacking functions in a compact, easy-to-remove Assembly (**Figure 1**). The Assembly is a high reliability unit that features long-lasting belts and gears with pulley phase matching for superior performance. JCM recommends cleaning the Assembly annually as part of a Preventive Maintenance program for optimum performance.

**Note:** Before using compressed air, remove the Motor Encoder. When reinstalling, ensure the ferrite cores are placed so the cover lays flat without bending or forcing it. To remove the Assembly:

1. Remove 2 screws and unplug 1 harness, lift the Assembly up, while tilting it toward the rear of the Transport unit.
2. Use compressed air to blow out debris, then clean the belts using mild soap and water.

## Latest JCM Software Listing

UNIT	Country	ID	Version	Check Sum	CRC
UBA-10/11-SS	USA	ID-003	V-2.83-52	3CDD	D358
UBA-10/11-SS	USA	ID-024	V-2.83-25	F54F	6DCE
UBA-14/24-SS/SU	USA	ID-003	V-2.83-40	B026	1455
UBA-14/24-SS/SU	USA	ID-0G8	V-2.83-76	3954	9DE3
UBA-14/24-SS/SU	USA	ID-024	V-2.83-37	647C	05B2
UBA-14/24-SS/SU	USA	ID-028	V-2.83-25	34A9	87B4
iVIZION-100 SS/SU	USA	ID-003	V-2.84-44	94D4	0789
iVIZION-100 SS/SU	USA	ID-008	V-2.83-22	7DEB	39B4
iVIZION-100 SS/SU	USA	ID-024	V-2.84-15	C0FC	652D
iVIZION-100 SS/SU	USA	ID-028	V-2.86-31	5EB6	C1BA
iVIZION-100 SS/SU	USA	ID-0G8	V-2.84-39	E589	DA07
UBA-10/11-SS	CAN	ID-003	V-2.82-52	B445	56DD
UBA-10/11-SS	CAN	ID-024	V-2.82-25	8FC3	D9AD
UBA-14/24-SS/SU	CAN	ID-003	V-2.82-40	CEF6	5E8C
UBA-14/24-SS/SU	CAN	ID-024	V-2.82-37	C66F	E2BE
UBA-14/24-SS/SU	CAN	ID-028	V-2.82-25	FD47	E01A
UBA-14/24-SS/SU	CAN	ID-0G8	V-2.82-74	F0D0	9716
iVIZION-100 SS/SU	CAN	ID-003	V-2.84-44	29AD	68F1
iVIZION-100 SS/SU	CAN	ID-024	V-2.84-15	F99C	D926
iVIZION-100 SS/SU	CAN	ID-028	V-2.84-31	6214	F0A6
iVIZION-100 SS/SU	CAN	ID-0G8	V-2.84-41	B4C9	81DE

The Latest JCM Software Listing (shown above) identifies specific software versions that have been released to OEMs. It is the responsibility of the OEM to obtain all required approvals from Gaming Regulators and Jurisdictional Authorities necessary for use of approved software versions. Contact the Game Manufacturer (OEM) for information on specific software releases approved for use within your gaming jurisdiction.

JCM recommends using the latest version for maximum acceptance, security, and performance.

## JCM eLearning Offerings

**JCM offers the following Training Options to help keep your JCM Products performing within factory specifications:**

### Online Training

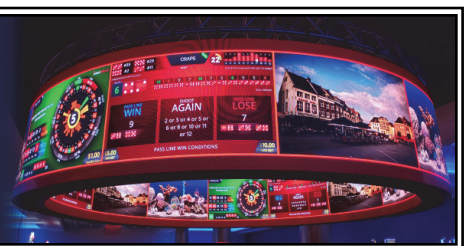
For those who prefer self-study, Online Training is available 24/7. Training can be completed as your schedule permits. A Certificate of Completion is provided upon course completion.

### Virtual Training

Instructor-led events for all JCM products are also available. Full interaction between attendees and the Instructor meets the needs of your team. Contact JCM Training at [training.jcmglobal.com](http://training.jcmglobal.com) for more information.

## Create Immersive Environments with JCM Global® Digital Signage Solutions

JCM Global Digital Signage Solutions allow operators to communicate with their guests in more meaningful and entertaining ways. With unsurpassed color uniformity and dazzling pixel-to-pixel resolution, JCM's digital signage technology offers guests a unique experience in sports books, hotel lobbies, casino floors, and more. The Digital Signage Solutions product line includes flat, curved, cube, and transparent displays that showcase engaging and impactful video content. From large scale LED video walls to intricate architectural signage, JCM delivers breathtaking installations that are only limited by the imagination.





# FREE JCM TRAINING AVAILABLE 24/7

Technicians need training, but is time or class availability a problem? JCM Online Training offers classes to meet your schedule and your needs. JCM Online Training Programs feature the same content as JCM On-site Training with the added convenience of flexible scheduling. Visit [training.jcmglobal.com](http://training.jcmglobal.com) for more information or to register for classes.

Technical Bulletin 202101 January 2021

## Technical Tip

**Question:** Is an updated version of the JCM ID-024 Basic Driver available?

**Answer:** The JCM ID-024 Basic Driver Application enables connecting and testing of Bill Validators with ID-024 firmware installed. A full-function test of the Bill Validator and the communications is completed.

An update to the JCM ID-024 Basic Driver has been placed on the JCM Global Exchange site. This Version 2.0.2 (**Figure 2**) includes improvements to the serial communication connections and USB-to-Serial Converters.

**Note:** The JCM ID-024 Basic Driver functions on all Windows® Operating Systems 7, 8 and 10 (both x86 and x64 systems). .NET Framework Version 4.0 (or higher) is required, and must be installed for the application to function. DotNetFX40\_client\_x86\_x64.exe is included in the download available on the JCM Global Exchange site at <https://exchange.jcmglobal.com>.

For additional information on JCM Products, visit the JCM Global website at [www.jcmglobal.com](http://www.jcmglobal.com), or contact your local JCM Sales Representative at (800) 683-7248.

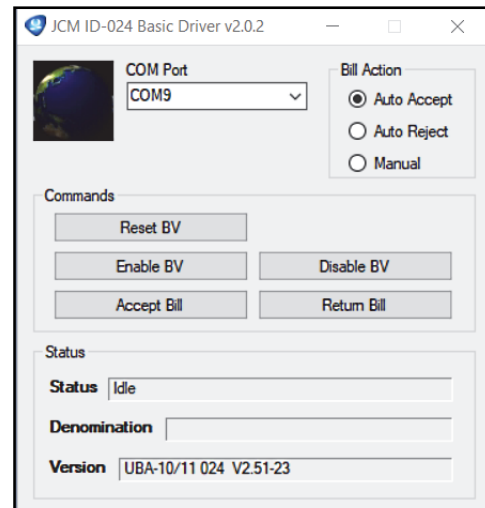


Fig 2 JCM ID-024 Basic Driver Version 2.0.2

## Current Service Manual Releases

Product	Rev.	Product	Rev.
DBV-500 Operations Manual	2	TBV	4
DBV-400 Operations Manual	1	TBV-101-ASH	A
DT-200 BlueWave 2	7	UBA-10/11/14/24/25	3b
EBA-40	2	UBA-RC	3
ICB 3.0 Web Reports Ops Manual	3	UBA Pro RT/RQ	A
iPRO	2	VEGA	5
iPRO-RC	3	VEGA-RC	3
iVIZION	7	FL Operator & Technician's Manual	3
JCM Tool Suite	4	GEN5 Operations Manual	2
PromoNet Marketing Studio	5	BlueWaveDX Tool (DT-300)	1
PromoNet Online Monitor	A		

To access JCM Product Manuals, visit: <https://exchange.jcmglobal.com>



### JCM TECHNICAL SUPPORT CONTACTS

<b>Headquarters (Japan)</b>		
Sales and Service	+81-3-5962-3731	hq-jp@jcmglobal.com
<b>Europe, Middle East, Africa, Russia</b>		
Sales	+49-211-530645-50	support@jcmglobal.eu
Service	+49-211-530645-60	
<b>Australia, Oceania</b>		
Sales and Service	+612 96 48 0811	australia@jcmglobal.com
<b>Southeast Asia</b>		
Sales and Service	+853 28 72 2684	asiasupport@jcmglobal.com
<b>North/South America/Canada/Caribbean</b>		
Toll Free Product Support	(800) 683-7248 or (702) 651-0000	support@jcmglobal.com
<b>After Hours Americas Support</b>		
<p>JCM American prides itself in offering the best Customer Service in the industry. We offer a 24 hour After Hours Hotline, where Technical Support Personnel can be reached at any time, 7 days a week. To reach our 24/7 After Hours Hotline:</p> <ol style="list-style-type: none"> <li>1.) Call JCM American at (800) 683-7248.</li> <li>2.) Select "Option 1" and wait for the call to be transferred to the JCM after hours Technical Support line.</li> <li>3.) Speak with a certified JCM Support Technician about your situation.</li> </ol>		

JCM Global is a registered trademark of JCM American Corporation. All other product names mentioned herein may be registered trademarks or trademarks of their respective companies. Furthermore, TM and ® are not mentioned in each case in this publication.