

www.jcmglobal.com

For updates on JCM Global products, services, and events, follow JCM Global on Facebook®, LinkedIn®, Twitter™ and YouTube™



facebook.com/JCMglobal

twitter.com/jcmglobal

linkedin.com/company/jcm-global

youtube.com/jcmglobal

Parts are Parts

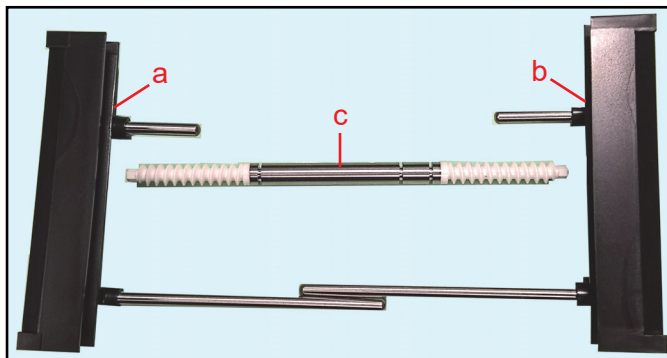


Figure 1 UBA Centering Mechanism Parts

Part No. 200-100845R, 200-100846R, 200-100842R

Description: UBA® Centering Mechanism Parts

Usage: The UBA Centering Mechanism aligns and positions inserted Banknotes in the center of the Banknote Path for improved validation.

Note: When servicing the UBA Centering Mechanism, JCM strongly recommends that all three parts be replaced at the same time. Replacing all parts improves the functionality of the Centering action and reduces the need for additional service. UBA Centering Mechanism Parts (refer to **Figure 1**) include:

- 200-100845R - Move Guide 1 (Left) (**Figure 1 a**)
- 200-100846R - Move Guide 2 (Right) (**Figure 1 b**)
- 200-100842R - Shaft, Move Screw (**Figure 1 c**)

Latest JCM Software Listing

UNIT	Country	ID	Version	Check Sum	CRC
UBA-10/11-SS	USA	ID-003	V-2.83-52	3CDD	D358
UBA-10/11-SS	USA	ID-024	V-2.83-25	F54F	6DCE
UBA-14/24-SS/SU	USA	ID-003	V-2.83-40	B026	1455
UBA-14/24-SS/SU	USA	ID-0G8	V-2.83-76	3954	9DE3
UBA-14/24-SS/SU	USA	ID-024	V-2.83-37	647C	05B2
UBA-14/24-SS/SU	USA	ID-028	V-2.83-25	34A9	87B4
iVIZION-100 SS/SU	USA	ID-003	V-2.84-44	94D4	0789
iVIZION-100 SS/SU	USA	ID-008	V-2.83-22	7DEB	39B4
iVIZION-100 SS/SU	USA	ID-024	V-2.84-15	C0FC	652D
iVIZION-100 SS/SU	USA	ID-028	V-2.86-31	5EB6	C1BA
iVIZION-100 SS/SU	USA	ID-0G8	V-2.84-39	E589	DA07
UBA-10/11-SS	CAN	ID-003	V-2.82-52	B445	56DD
UBA-10/11-SS	CAN	ID-024	V-2.82-25	8FC3	D9AD
UBA-14/24-SS/SU	CAN	ID-003	V-2.82-40	CEF6	5E8C
UBA-14/24-SS/SU	CAN	ID-024	V-2.82-37	C66F	E2BE
UBA-14/24-SS/SU	CAN	ID-028	V-2.82-25	FD47	E01A
UBA-14/24-SS/SU	CAN	ID-0G8	V-2.82-74	F0D0	9716
iVIZION-100 SS/SU	CAN	ID-003	V-2.84-44	29AD	68F1
iVIZION-100 SS/SU	CAN	ID-024	V-2.84-15	F99C	D926
iVIZION-100 SS/SU	CAN	ID-028	V-2.84-31	6214	F0A6
iVIZION-100 SS/SU	CAN	ID-0G8	V-2.84-41	B4C9	81DE

The Latest JCM Software Listing (shown above) identifies specific software versions that have been released to OEMs. **It is the responsibility of the OEM to obtain all required approvals from Gaming Regulators and Jurisdictional Authorities necessary for use of approved software versions.** Contact the Game Manufacturer (OEM) for information on specific software releases approved for use within your gaming jurisdiction.

JCM recommends using the latest version for maximum acceptance, security, and performance.

JCM Service Offerings

JCM offers the following services to help keep your JCM Products performing within factory specifications:

- **Warranty and Non-Warranty Service and Repair**
- **Preventive Maintenance Programs**
- **Custom Training Classes**
- **ICB Data Analysis**
- **Unit Exchange Programs**
- **Validator Performance Analysis**

JCM Global® Is The Source For All Your Display Needs!

JCM Global incorporates the latest digital display technology (single screen to large scale video wall solutions), digital content creation services and networked solutions for all your media needs. JCM Global products combine unsurpassed color uniformity and the best pixel-to-pixel resolution available in the Gaming industry in an easy-to-install package. JCM Global MAX-S™ provides a high-resolution interlocking panel solution for large scale LED Video screens. JCM Global FLEX™ offers articulating panels for curved surface implementations. JCM Global CUBE & FLOOR™ supports 3-D Video Displays and JCM Global ELEMENTS™ supports outdoor installations. For details, visit the JCM Global website at www.jcmglobal.com!





FREE JCM TRAINING AVAILABLE 24/7

Technicians need training, but is time or class availability a problem? JCM Online Training offers classes to meet your schedule and your needs. JCM Online Training Programs feature the same content as JCM On-site Training with the added convenience of flexible scheduling. Visit training.jcmglobal.com for more information or to register for classes.

Technical Bulletin 202005 May 2020

Technical Tips

Question: Is an update to the JCM Tool Suite application available?

Answer: The JCM Tool Suite™ Application has been updated to Version 1.48.00 (**Figure 2**). This version supports the UBA Pro RT/RQ™ for Downloading, Calibration, Utility and Performance Testing. JCM Tool Suite v1.48.00 includes the following updates:

- Updates the Statistics function for all Units;
- Updates the Download function for iVIZION® and TBV® Units; and
- Updates the Calibration function for DBV®-400, DBV-500 and EBA®-40 Units.

For best performance, JCM recommends the most current JCM Tool Suite version should be used. To display the Version:

1. From the JCM Tool Suite Standard Edition UI, click Help (**Figure 2 a**).
2. Select Version from the menu to display the current JCM Tool Suite Version.

Note: JCM Tool Suite Version 1.48.00 can be downloaded from <https://exchange.jcmglobal.com>.

For additional information on JCM Products, visit the JCM Global website at www.jcmglobal.com, or contact your local JCM Sales Representative at (800) 683-7248.

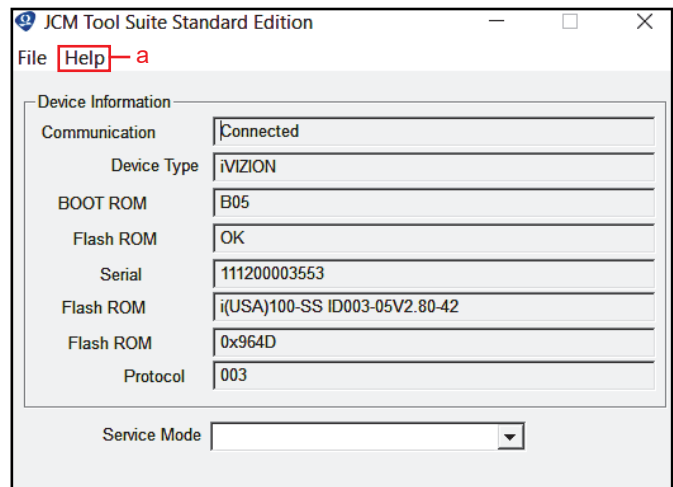


Figure 2: JCM Tool Suite Standard Edition UI (cut-away)

Current Service Manual Releases

Product	Rev.	Product	Rev.
DBV-30X	4	iVIZION	7
DBV-500 Operations Manual	1	Taiko (PUB-7/11)	6
DBV-400 Operations Manual	1	TBV	3
DT-200 BlueWave 2	7	TBV-101-ASH	A
EBA-40	2	UBA-10/11/14/24/25	3b
ICB Service Manual	4	UBA-RC	3
ICB 3.0 Web Reports Ops Manual	3	VEGA	4
iPRO	2	VEGA-RC	3
iPRO-RC	3	FL Operator & Technician's Manual	3
RC-10 Service Manual	1	GEN5 Operations Manual	2
JCM Tool Suite	4	BlueWaveDX Tool (DT-300)	1

To access JCM Product Manuals, please visit: www.jcmglobal.com

JCM TECHNICAL SUPPORT CONTACTS		
Headquarters (Japan)		
Sales and Service	+81-3-5962-3731	hq-jp@jcmglobal.com
Europe, Middle East, Africa, Russia		
Sales	+49-211-530645-50	support@jcmglobal.eu
Service	+49-211-530645-60	
Australia, Oceania		
Sales and Service	+612 96 48 0811	australia@jcmglobal.com
Southeast Asia		
Sales and Service	+853 28 72 2684	asiassupport@jcmglobal.com
North/South America/Canada/Caribbean		
Toll Free Product Support	(800) 683-7248 or (702) 651-0000	support@jcmglobal.com
After Hours Americas Support		
<p>JCM American prides itself in offering the best Customer Service in the industry. We offer a 24 hour After Hours Hotline, where Technical Support Personnel can be reached at any time, 7 days a week. To reach our 24/7 After Hours Hotline:</p> <p>1.) Call JCM American at (800) 683-7248.</p> <p>2.) Select "Option 1" and wait for the call to be transferred to the JCM after hours Technical Support line.</p> <p>3.) Speak with a certified JCM Support Technician about your situation.</p>		

JCM Global is a registered trademark of JCM American Corporation. All other product names mentioned herein may be registered trademarks or trademarks of their respective companies. Furthermore, TM and ® are not mentioned in each case in this publication.